

# Partnerships with the Crick

Francis Marshall

[francis.marshall@crick.ac.uk](mailto:francis.marshall@crick.ac.uk)  
Laboratory Resourcing and Reviews Manager

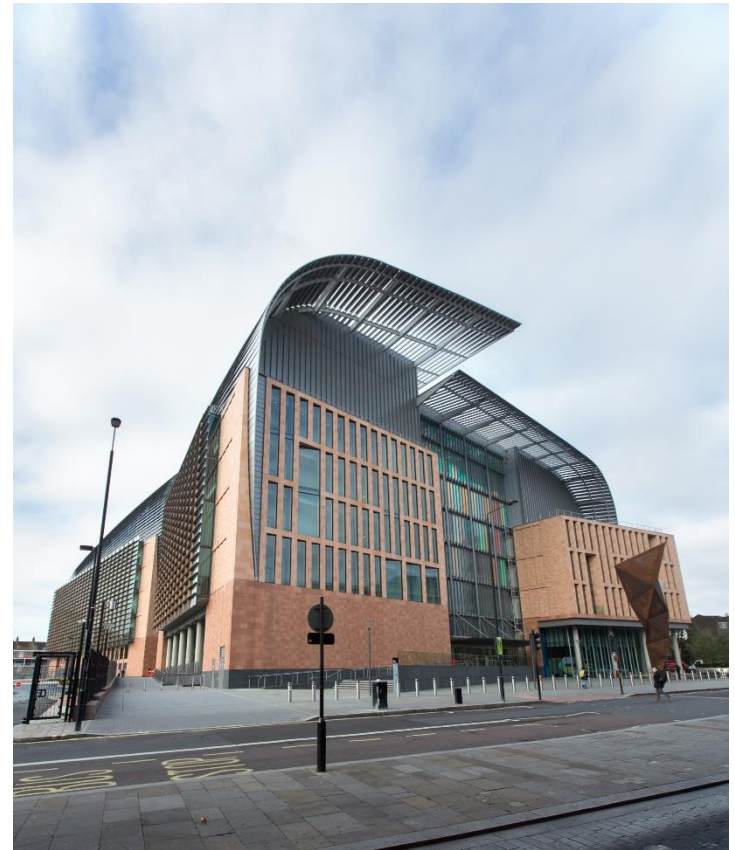


# The university attachment scheme



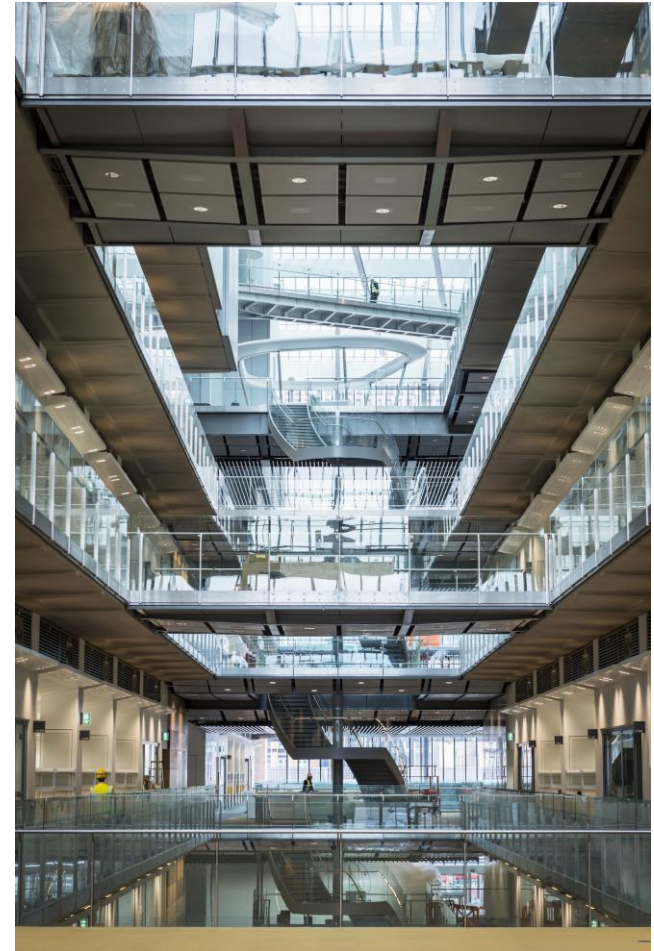
## Aims of the Scheme:

- To bring together researchers from the Crick and its partner institutions (King's, Imperial, UCL) and form multidisciplinary collaborations.
- To attract people and groups with skills that complement the Crick's core talents and capabilities and to support research projects that will best benefit from collaborative working.
- To bring expertise in translational, clinical, physical, mathematical and computational sciences into the Crick.



# Types of University attachment

- **Secondments** allow a PI to transfer all or part of their research group to the Crick for an agreed period (typically between 3 and 6 years). Usually the PIs in question are early in their careers.
- **Satellites** comprise small groups of university researchers (usually one to three) embedded in a Crick research group or STP for an agreed period (typically between 1 and 3 years).
- **Sabbaticals** will enable a PI to spend up to a year working in a Crick research group, for example to learn new techniques or to undertake a hands-on collaboration.



# How attachments work

- Selected through a **competitive process**, based on:
    - Excellence of the research proposal
    - Added value to secondee group, the Crick and the University
    - Interdisciplinarity
    - Career development
  - Transferring staff **remain employees of home institution**
  - The work of these researchers is supported by **external grants** held by the university
  - Attachments may be in **both directions**, but so far almost exclusively university to Crick
  - **Annual call**, the next round of university attachments will launch in January 2020.
-

# Networking Fund

**A scheme to encourage networking between the Crick and the university Partners**

- Create and promote a range of opportunities for the Crick-HEI Group Leaders and Principal Investigators to build professional networks within the Partnership and beyond their own discipline.
- The Networking Fund holds £40k for networking activities and supports activities of up to £3k.
- Funding may be used to cover travel and meeting costs to facilitate networking and collaboration. Funds cannot be used to fund research/cover salaries.

Next deadline 7<sup>th</sup> October 2019  
Further details: [solene.debaisieux@crick.ac.uk](mailto:solene.debaisieux@crick.ac.uk)

---

# Associate Interest Group Membership

- A scheme to allow university partner researchers to join Crick interest groups.
- Open call for members from the partners, with a selection process based on availability.
- Second call expected to launch late 2019/ early 2020.





Imperial College  
London



wellcome**trust**

